

Running US EPA Models Wall Paint Exposure Model (WPEM) or Multi-Chamber Chemical Exposure Model (MCCEM) in Windows 10 with a “Virtual Machine” Emulating Windows 7 (XP mode)¹.

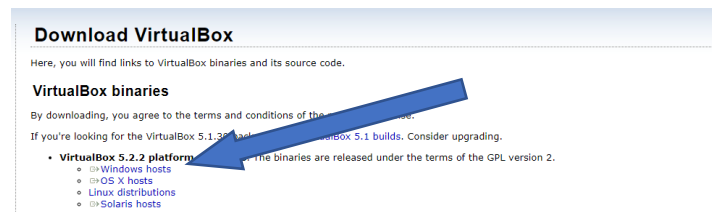
Thomas W. Armstrong, TWA8HR Occupational Hygiene Consulting, LLC

www.twa8hr.com

December 10, 2017

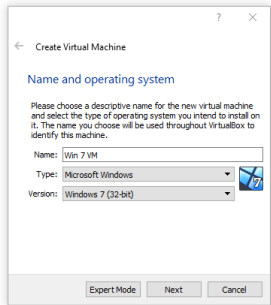
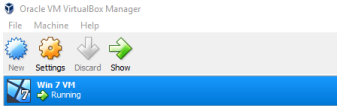
Although there are other ways to do this, including with Windows 10 Professional edition, the following requires minimal software purchases.

1. Obtain a Windows 10 computer for which you have ADMINISTRATIVE rights. In many corporations this may need to be a “lab machine” or other PC completely unconnected to the company network. You may also seek permission to install the VirtualBox software as well as WPEM and MCCEM via your organizations software approval channels.
2. Download freeware, VirtualBox. <https://www.virtualbox.org/wiki/Downloads> (Windows hosts)

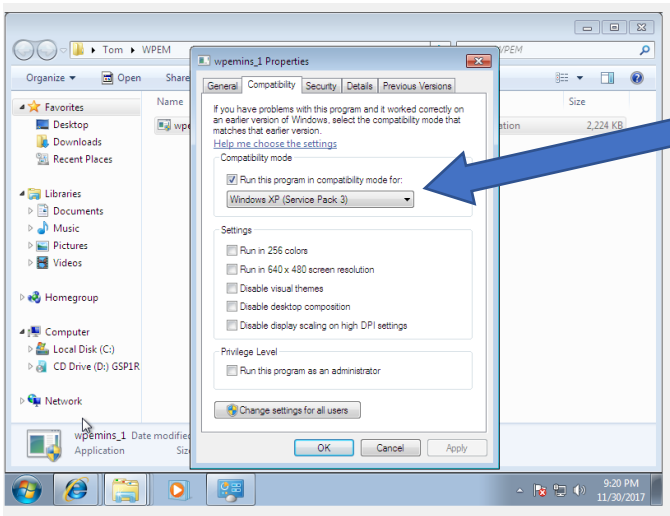


3. Install VirtualBox (currently virtualBox-5.2.2-119230-win.exe)
4. You will also need a Windows 7 install file (ISO). I did not have one available so purchased one for \$20.80 at <https://www.win-key-download.com/index.php>. Note this was using a Microsoft Windows 7 Product Key I had from a decommissioned Windows 7 computer. You may face a higher fee for a full copy that includes the Microsoft Product Fee. After purchase, within 10 minutes I had a link to download the ISO for Win 7 and the Windows 7 registration key.
5. Copy the ISO file to a writeable DVD or a flash drive. The file is a bit over 2.5 GB. I used a flash drive.
6. In VirtualBox “create” a Win 7 virtual machine. VirtualBox will guide you through this. You will need to specify where the ISO file for Win7 is and you will need the Win7 product registration key. The install process will ask several questions. I used the “suggested” values. When you get to the “Select startup disk”, you will need to specify the drive letter location for the ISO file for Win 7. This then initiates the Windows 7 install in the VM environment. The “machine” may restart to complete the install.

¹ Windows 7 in XP mode offers greater ease in file transfer from the virtual machine environment than it is running a Virtual Machine copy of XP. Even if you have a license for XP, you might like the improvements in Windows 7 (XP Mode).



7. When in VirtualBox and running Win7, you will need to download and install WPEM and MCCEM **from within the VM**. You may also need to keep the flash drive or DVD disk with the Win 7 ISO in the computer.
8. If you shut down the computer, you may need to reinstall Windows 7 the same way when you restart the PC.
9. Installing MCCEM is easy. Just from within the Win7 virtual machine window, find the MCCEM install file and run it.
10. WPEM takes one additional step. From within the WIN7 virtual machine, navigate to the WPEMINS file and RIGHT click to check and modify the file properties. See below. Trigger it to run in Windows XP compatibility mode. Then click on the file to install WPEM.



¹ Windows 7 in XP mode offers greater ease in file transfer from the virtual machine environment than it is running a Virtual Machine copy of XP. Even if you have a license for XP, you might like the improvements in Windows 7 (XP Mode).